



KONGSBERG

# Seapath 300+

## Precise Heading, Attitude and Positioning Sensor

The Seapath 300+ product is developed specifically for the hydrographic and other high precision applications where heading, position, roll, pitch, heave and timing are critical measurements. The product combines inertial technology together with GPS satellite signals. Core components in the product are the MRU 5+ inertial sensor, the Processing and HMI Unit.

### Integrated Inertial/GPS product

The Seapath 300+ offers the best possible combination of GPS signals and inertial measurements for demanding operations in challenging environments.

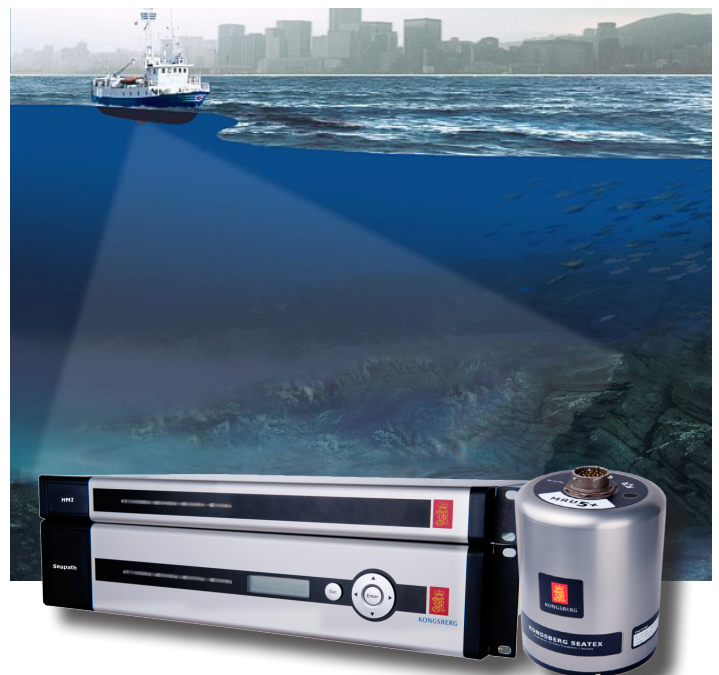
This Seapath product include the latest MRU generation, the MRU 5+, providing 0.01 RMS roll and pitch accuracy. This accuracy is achieved by the use of accurate linear accelometers and unique MEMS type angular rate gyros.

The combination of GPS signals and inertial data enabling much better performance than each of the signals alone with high output data rate (up to 200 Hz), zero delay on output data, data available in up to eight different monitoring points and a total of sixteen configurable serial lines and Ethernet ports, together with three analog channels.

### Accuracy and reliability

The redundancy of the Seapath measurements is improved by utilizing the two built-in GPS receivers for position and velocity determination. In case of missing data from one GPS receiver, then the other (remaining) receiver provides position and velocity, and the inertial sensor provides heading from its internal rate sensors.

The Seapath 300+ is robust against GPS dropouts by using the inertial sensor part of the product to provide position, velocity and heading measurements when GPS signals are not available. No user actions are required.



### System configuration

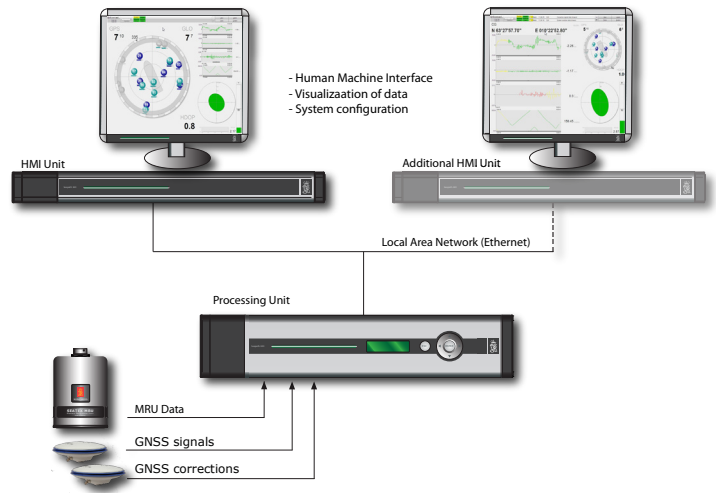
This Seapath product is a two module solution with a Processing and an HMI Unit connected via Ethernet. The Processing Unit runs all critical computations independent from user interface on the HMI Unit to ensure continuous and reliable operation. Multiple HMI Units can be connected to the same Processing Unit in a networked architecture. The HMI Units present the vessel motion in a clear and easy to understand format. The Seapath is operated through the operator software installed on one or several HMI Units. This software is used for performance monitoring, configuration and troubleshooting of the system.

### Applications

This integrated navigation product is a unique solution for application within hydrographic surveying, dredging, oceanographic research, seismic work and offshore construction where accurate compensation of multibeam echo sounders, hydro acoustic positioning systems and ADCP's or vessel motion monitoring are required

## Features Seapath 300+

- 0.01° roll and pitch accuracy.
- No accuracy degradation in roll, pitch and heave measurements during turns
- Down to 2 cm heave accuracy by use of the PFreeHeave<sup>(R)</sup> algorithms.
- Robust against GPS dropouts due to the inertial sensor part of the product
- Multiple differential correction support including SBAS
- All data have the same time stamp and to an accuracy of 0.001 s to the actual measurement time
- Outputs on RS232, RS422, Ethernet and analog channels
- Up to 200 Hz data output rate



## Technical specifications

### Performance

Heading accuracy	0.05° RMS (4 m baseline) 0.75° RMS (2.5 m baseline)
Roll and pitch accuracy	0.01° RMS for ±5° amplitude
Scale factor error in roll, pitch and heading	0.05% RMS
Heave accuracy (real-time output)	5 cm or 5% whichever is highest
Heave accuracy (delayed signal)	2 cm or 2% whichever is highest
Heave motion periods (real-time)	1 to 20 seconds
Heave motion periods (delayed signal)	1 to 50 seconds
Position accuracy (DGPS/DGlonass)	1.1 m (95% CEP)
Position accuracy (SBAS)	1.1 m (95% CEP)
Position accuracy (with RTK corrections)	0.20 m (95% CEP)
Velocity accuracy	0.07 m/s (95% CEP)

### Data outputs

Communication ports	8 serial RS232/RS422 lines and 16 Ethernet UPD/IP ports
Data output interval	Programmable in 0.005-sec. steps and 1PPS pulse
Data update rate	Up to 200 Hz

### Dimension and weight:

Processing Unit	2U 19" rack, 412 mm (d) x 88 mm (h), 485 mm (w) weight 5.4 kg
HMI Unit	1U 19" rack, 405 mm (d) x 44 mm (h), 485 mm (w), weight 3.8 kg
Monitor	380 mm (w) x 383 mm (h) x 170 mm (d), weight 3.8 kg
IMU	Ø105 x 140 mm, weight 2.5 kg.

### Environmental specification

#### Operating temperature

Processing and HMI Unit	-15 to +55°C
Monitor	5 to +40°C
IMU	-5 to +55°C
Antenna	-40 to +70°C

#### Power

Processing Unit	100 to 240V AC, 75 W (max)
HMI Unit	100 to 240V AC, 40 W (max)
Monitor (optional)	100 to 240 VAC, 23 W (max)

#### Humidity

Processing and HMI Unit	10-95% relative non condensing
Monitor	20-80% relative non condensing
IMU	Hermetically sealed
Antenna	Hermetically sealed